



#### CONTROL PANELS

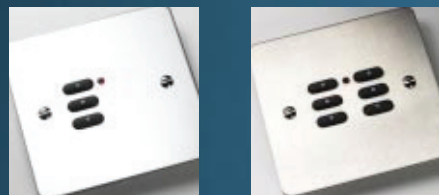
Range of contemporary wireless control panels providing up to 4 scenes plus off and master raise and lower. Flush or low-profile surface mounting with five standard plate finishes. LED indication for message transmission and low battery warning. Control up to 15 channels per room with over 65,000 possible room addresses. The 7 button control panel provides full scene programming capability.

- RCP07-W 4 Scenes and off plus master raise and lower, programming panel. Finished in white and supplied with white cover plate.
- RCP07-C 4 Scenes and off plus master raise and lower, programming panel. Finished in charcoal and supplied with charcoal grey cover plate.
- RCP02-W 2 Button controller with white surround. Requires RPP cover plate.
- RCP02-C 2 Button controller with charcoal surround. Requires RPP cover plate.

#### Cover plate finish kits:

- RPP07-SS Brushed Stainless Steel
- RPP07-MSS Mirror Stainless Steel
- RPP07-PB Polished Brass
- RPP02-SS Brushed Stainless Steel
- RPP02-MSS Mirror Stainless Steel
- RPP02-PB Polished Brass

Other finishes available upon request.



#### CURTAIN, SCREEN AND BLIND CONTROL PANELS

Integrate the control of curtains, blinds and screens into one single control panel, available in 3 and 6 button panels. The RACUB module will look after the motor switching.

- RPS03-W 3-Button screen/blind controller. White surround complete with white cover plate.
- RPS03-SS 3-Button screen/blind controller. Charcoal surround complete with Brushed Stainless Steel cover plate.
- RPS03-MSS 3-Button screen/blind controller. Charcoal surround complete with Mirror Stainless Steel cover plate.
- RPS03-PB 3-Button screen/blind controller. Charcoal surround complete with Polished Brass cover plate.

RACUB Motorised blind and curtain controller  
Size: 160mm length x 50mm width x 36mm depth



#### DIMMER MODULES

The range of dimmer modules are hard fired and use leading edge digital technology. The units store the house and room address plus four preset scene levels in a non volatile memory. Robust design features include auto-resetting over current and temperature shutdown and voltage surge protection. Versions available for ceiling or in-line mounting.

- RDL250C 250w dimmer suitable for ceiling mounting
  - RDL250L 250w dimmer suitable for in-line mounting
  - RDL500C 500w dimmer suitable for ceiling mounting
  - RDL500L 500w dimmer suitable for in-line mounting
- Size: 160mm length x 50mm width x 36mm depth

RDL1200C 1200w dimmer suitable for ceiling mounting  
Size: 190mm length x 100mm width x 60mm depth

RAK-4 4 channel stackable rack solution  
Size: 192mm length x 253mm width x 102mm depth

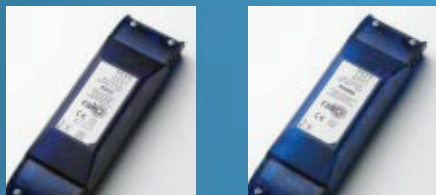
RX-LINK Remote RF receiver module for use with RAK-4 system  
Size: 160mm length x 50mm width x 36mm depth



#### HAND HELD CONTROL PANELS

With all the features of the control panel but in an elegant hand held case.

- RAH07 4 Scenes and off plus master raise and lower, programming panel.

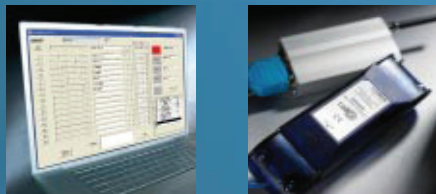


#### FLUORESCENT DIMMER AND SWITCHING MODULES

These modules are designed to control fluorescent lamps fitted with analogue or digital regulating ballasts that meet IEC929, Tridonic DSI or DALI standards. RDS switching module can be used to switch any type of load within its rating.

- RDF800C 800w Fluorescent 1-10v analogue dimmer for ceiling mounting
- RDDSI 800w Fluorescent DSI digital dimmer for ceiling mounting
- RDDALI 800w Fluorescent DALI digital dimmer for ceiling mounting
- RDS800C 800w Switching Module for ceiling mounting

Size: 160mm length x 50mm width x 36mm depth

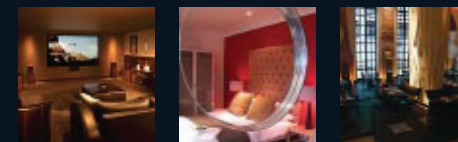


#### SOFTWARE & ACCESSORIES

The intuitive RASOFT software allows configuration and programming of the system from a PC. Other accessories include audio-visual interface, SMS text receiver and infrared to RF converter.

- RASOFT PC control and programming software
- RAV232 RS232 to RAKOM radio interface
- RAV232plus Bi-directional RS232 to RAKOM radio interface
- RAUSB USB to RAKOM interface for RASOFT programming software
- RAB100 100m RAKOM radio signal repeater
- RAVFR Volt-free contact to RAKOM radio interface unit
- RAVIR Infrared to RAKOM radio interface unit
- RAIPC Intelligent Partition Control unit
- RADMX 8 channel RAKOM radio to DMX output unit
- RAVSMS SMS text message to RAKOM radio interface
- RAVLC Living Control to RAKOM radio interface
- RAMB1 Astro Timeclock unit
- RAPSU Mains power supply for RA range of accessories

**iqhome**  
IMAGINE A HOME WITH IQ



MOOD | AMBIENCE | FUNCTION

**rako**

Rako Controls Ltd Slip 7, The Historic Dockyard, Chatham, Kent ME4 4TE  
E-mail: sales@rakocontrols.com Telephone 0870 043 3905 Fax 0870 043 3906  
www.rakocontrols.com

Suite 6, 2 Small Street  
Hampton, VIC. 3188  
Phone: (03) 9598 4256  
FAX: (03) 9598 4323

Email: info@iqhome.com.au  
Web: www.iqhome.com.au

Acknowledgements: DSE Digital, Marantz UK Ltd, and East Hotel, www.designhotels.com.

Rako reserve the right to change the specification and data herewith without notice. The Rako logo is a trademark of Rako Controls Ltd.

Designed & produced by Ratcliffe Fowler Design. Tel: +44 116 2420200

© 2006 Rako Controls Ltd

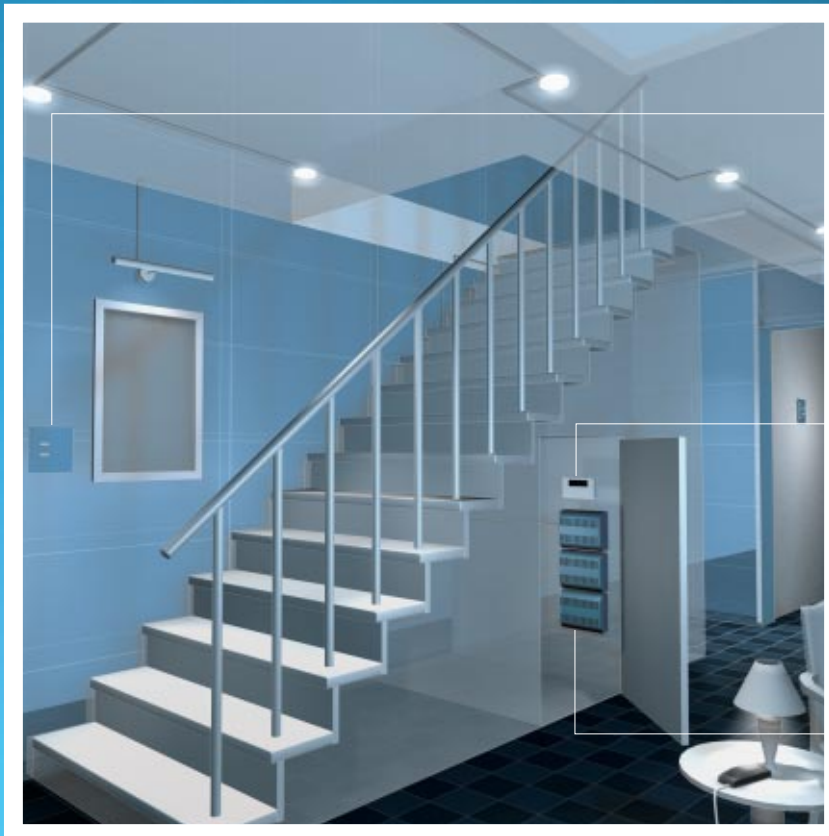
## SIMPLE LIGHTING CONTROL IN A SOPHISTICATED WORLD

Rako is leading the way in providing state of the art digital dimming technology. Our innovative solutions meet the needs of a diverse range of applications by offering lighting systems that are simple to use, easy to install, creative and cost effective. As you'd imagine, we've got all the basics right but where we outsmart other offerings is through quick and effortless installation. We provide all the benefits of a sophisticated lighting control system but without the hassle of rewiring. Rako modules can be quickly and easily installed into any environment, domestic or commercial, from hotel bedrooms and function rooms to restaurants and churches.

### THIS IS HOW IT'S DONE

Installation of most sceneset dimmers today involves complete rewiring. Rako lighting control equipment overcomes this problem immediately making retro-fit simple. Unlike most conventional systems, control panels communicate with dimmer modules using wireless radio communication. This allows the addressable dimmers to be fitted locally to the light fittings. With 65,000 possible addresses and a range of 15m, or 100m with a booster, it can accommodate the largest of schemes. Each control panel can select up to 4 preset scenes plus off and has a master raise and lower. System commissioning and programming of scenes can be performed from the control panel, hand held or from your PC using our intuitive software.

## WHOLE HOUSE CONTROL



**WHOLE HOUSE CONTROL**  
For ultimate simplicity and control, have whole house control in the entrance hall. Panels can be set to give 'Master' control allowing the whole house to be switched on or off at the touch of a button.

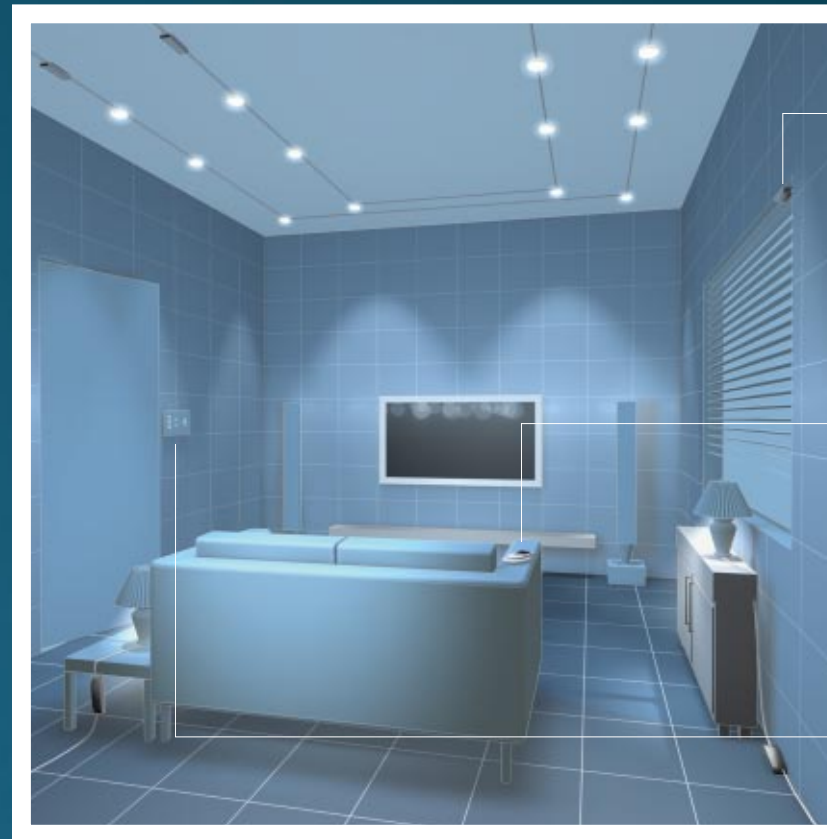


**TIMECLOCK**  
With a Timeclock module you can turn lights on automatically at dusk, program a sequence or let the Timeclock replay normal occupancy whilst you take a holiday.



**RACK OPTIONS**  
When it is necessary to wire back to one location or for larger installations the RAK-4 can be stacked to form 8, 12 or 16 way cabinets and with one Rx-Link receiver module located anywhere in the building, it still allows Rako wall panels to communicate without data cabling.

## LOUNGE/HOME CINEMA ROOM



**CURTAINS/BLINDS, SCREENS**  
Integrate the control of curtains, blinds and screens into one single wall panel. The RACUB module takes care of the motor switching and can be activated from any of the Rako controllers.

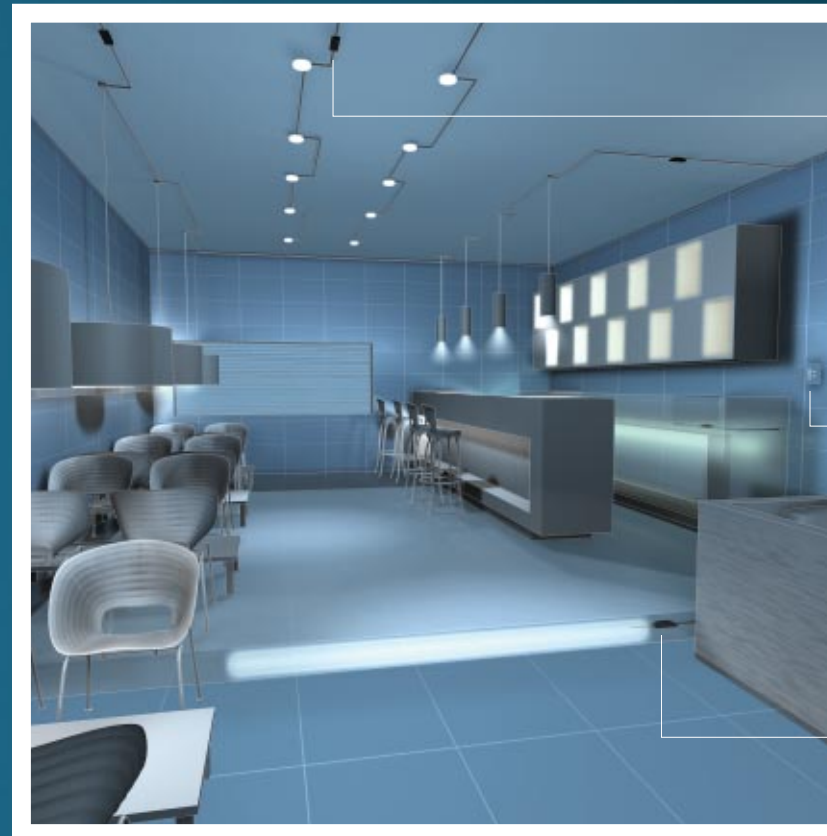


**SYSTEM INTEGRATION**  
Integrate with multi room audio, security systems, PC and audio visual controllers. Bi-directional RS232 interfacing allows PC based systems and audio visual controllers to communicate with the Rako network.



**CUSTOMISED CONTROL PANELS**  
Double gang control panels providing the capability for both lighting and curtain/blind or screen control on one panel. Special finishes available upon request.

## RESTAURANTS, PUBS AND CLUBS



**DIMMER MODULES**  
Rako modules simply wire in-line with the lighting circuit and can either be located in ceiling voids and fitted through a standard down-light cut out, or wired in-line and plugged into your nearest socket.



**CONTROL PANELS**  
Choose from the range of contemporary wireless control panels to match functional needs and the interior, surface or flush mounted options have no necessity for back-boxes or wires of any sort.



**LOAD TYPES**  
Rako has a dimmer to suit all load types including incandescent, low voltage, LEDs, colour changers, cold cathode, fluorescent and non-dimmed loads.

PUT SIMPLY, RAKO HAS NO LIMITS